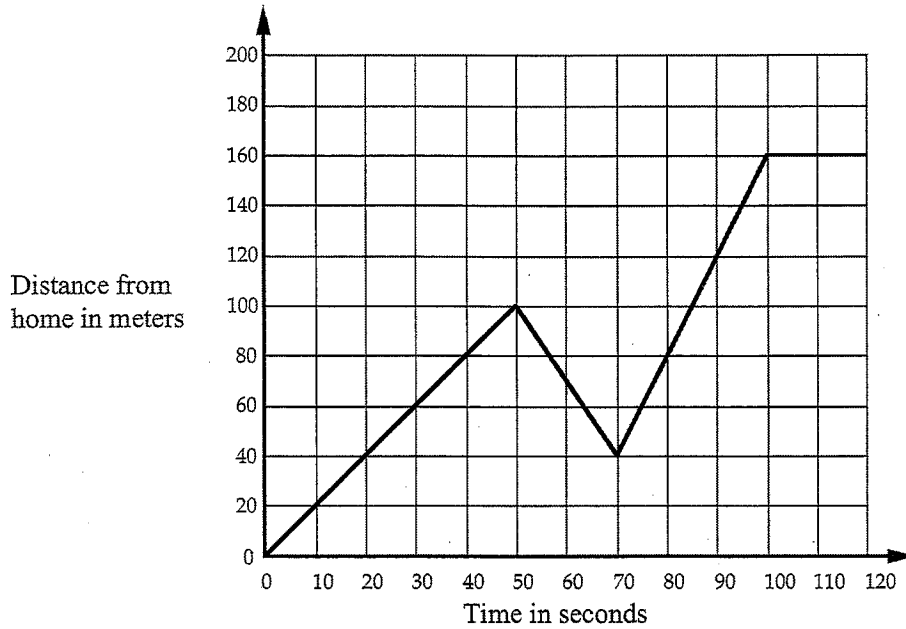


Journey to the Bus Stop

Every morning Tom walks along a straight road from his home to a bus stop, a distance of 160 meters. The graph shows his journey on one particular day.



1. Describe what may have happened. You should include details like how fast he walked.

.....

.....

.....

.....

.....

.....

.....

.....

2. Are all sections of the graph realistic? Fully explain your answer.

.....

.....

.....

.....